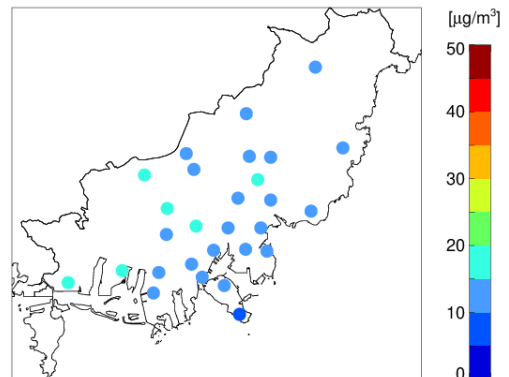
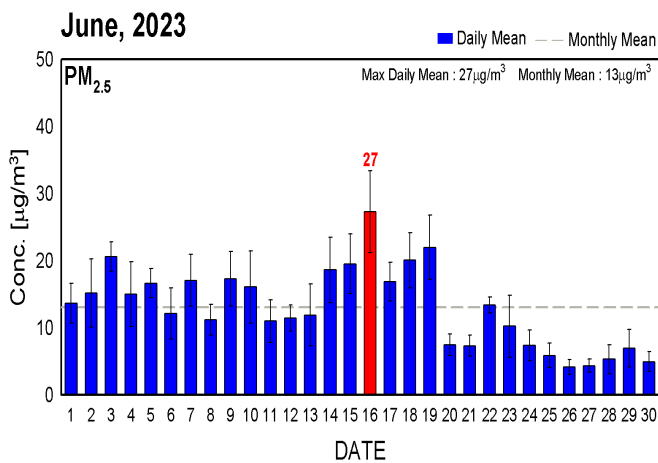


부산(남동권) 미세먼지 현황 (2023년 6월)

1. 부산지역 미세먼지 측정소

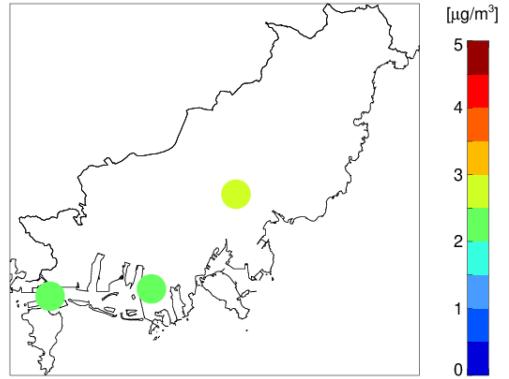
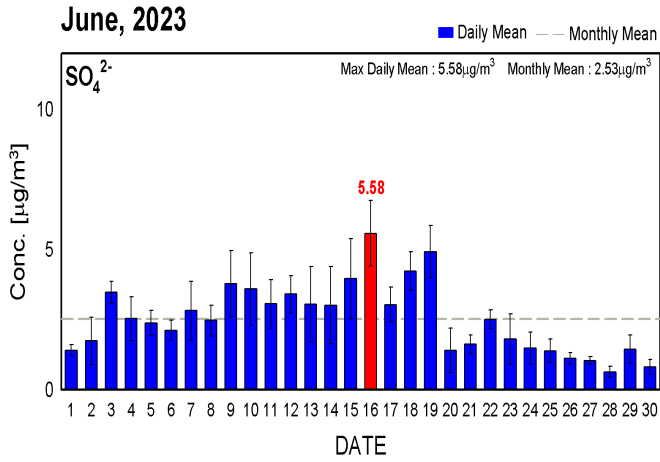


2. 부산지역 미세먼지 질량 농도

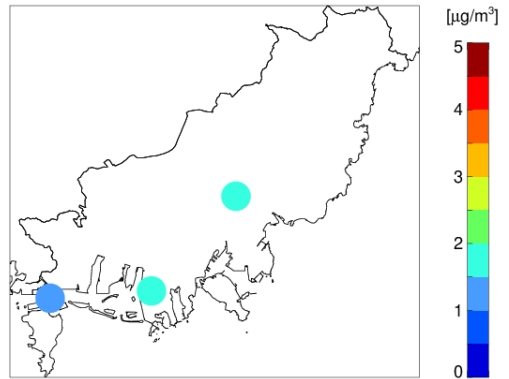
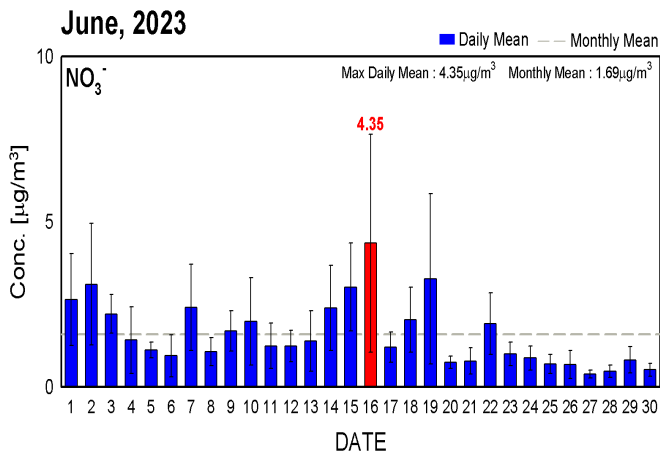


3. 부산지역 미세먼지 성분 질량 농도

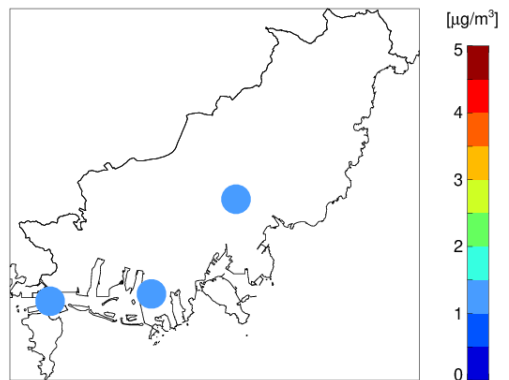
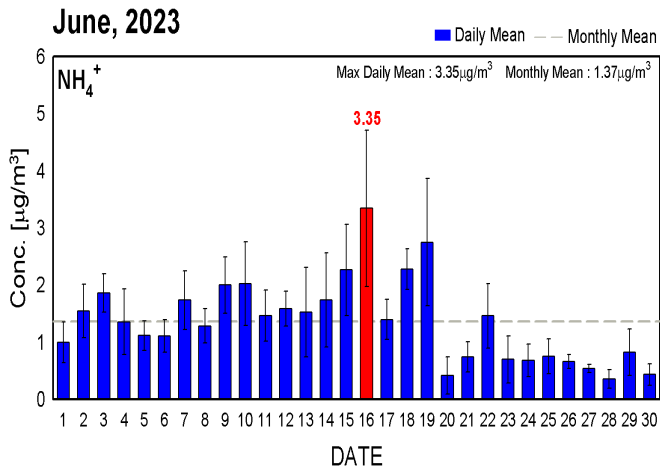
1) SO₄²⁻ 농도



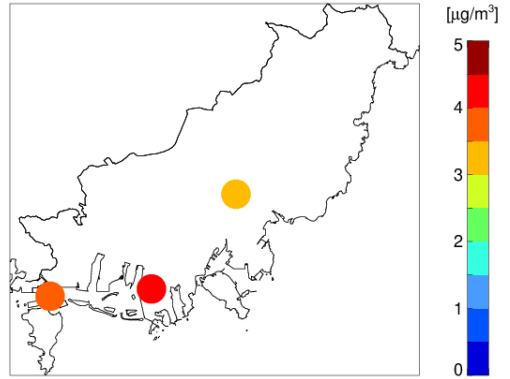
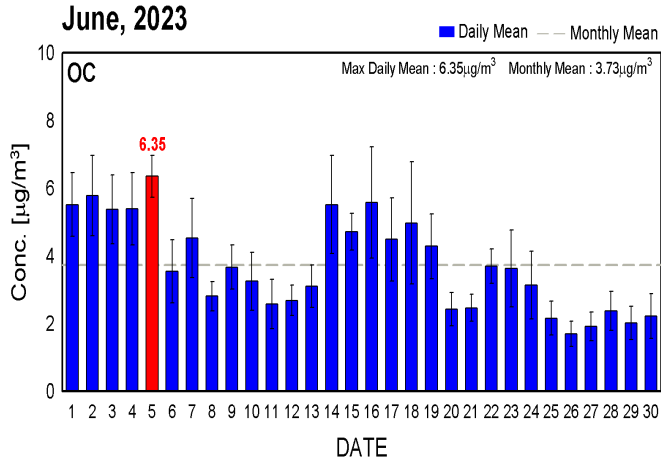
2) NO₃⁻ 농도



3) NH₄⁺ 농도



4) OC 농도



5) EC 농도

